

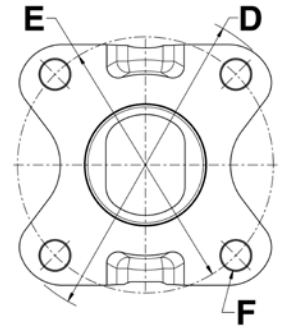
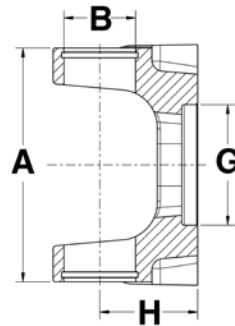


New Part Announcement

New 1310 Series Conversion Flange Yoke N2-2-206

OUTSIDE LOCK-UP

The N2-2-206 Flange Yoke converts various Dodge Dakota, Durango, and Jeep Cherokee drive shafts with NTN 6 ball plunge style joints to 1310 series. It allows you to provide your customer with an alternative to the dealer only service shaft. The N2-2-206 compliments the N2-83-206, our 1310 series CV flange adapter and will allow you to build a replacement driveshaft in either a single joint or double cardan joint configuration.



D	E	F		G		H	
Swing Diameter	Bolt Circle	Hole/Thread Size	No. Bolt Holes	Pilot Diameter	Joint Angle (Deg)	Flange Face To Centerline	Part No.
1310 Series	use Kit No. 1-0153	A-3.469		B-1.063	(Replaces Spicer® 5-153X)		
3.937	3.386	0.323	6	M-3.937	20°	2.19	N2-2-206

NEAPCO Components, LLC 740 Queen St. Pottstown, PA 19464

Phone: 800-821-2374

E-mail: hd@neapco.com

Innovative Drivetrain Solutions™

Fax: 610-326-2002

Web site: www.neapco.com

©2009 NEAPCO Components, LLC

9901140

06/2009

1