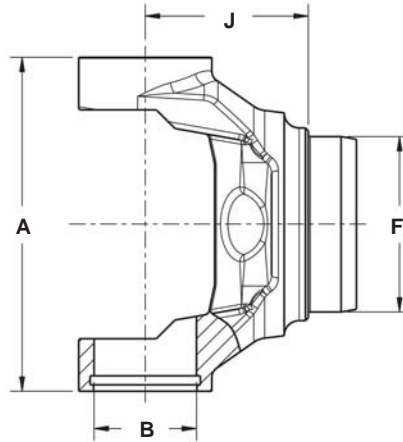


# Product Announcement

## N1310 TUBE WELD YOKE

### Outside Snap Ring



**Note:** Some non-Neapco driveline tubing sizes will require that dimension "F" (butt diameter) be reduced for proper tubing interference. Machine the butt diameter .008" to .012" greater than the inside diameter of the tube.

For use with Tubing Diameter and Wall	F		J Centerline to Point of Weld	Joint Angle	Used in Yoke and Tube Assembly	Tube Yoke Part Number
	Butt Diameter	Type of Butt				
N1310 Series	use Kit No. 1-0153	A-3.469	B-1.062		(Replaces Spicer <sup>®</sup> No. 5-153X)	
2.000X.095	1.820	Ho	1.688	22°	—	N2-28-577

NEAPCO INC. 740 Queen St. Pottstown, PA 19464

*Innovative Drivetrain Solutions*

Phone: 800-821-2374  
E-mail: [hd@neapco.com](mailto:hd@neapco.com)  
©2004 Neapco Inc.

( Insert this sheet into  
Section V in the  
DS245 Master Catalog )  
9901025

Fax: 610-326-2002  
Web site: [www.neapco.com](http://www.neapco.com)  
08/04 1