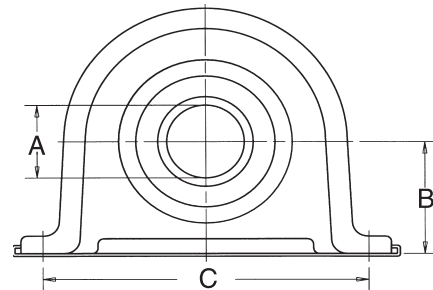




Product Update

Center Support Update

Replaces Product Announcement 9901028 dated 11/05



N235150 shown

Part Number	O.E. Part Number	Application
N211848-1X	4773014 5014097AA	DODGE 2000-2002
N212028-1X	12472456	CHEVROLET 2000-2004, GMC 2000-2004
N235150	12472452 12472460 5080662AA	CHEVROLET 2000-2004, GMC 2000-2004 DODGE 2002-2004
N235200	88936353	CHEVROLET 2000-2002, GMC 2000-2002

A Bore (Inches)	B Centerline (Inches)	C Hole Spacing (Inches)	D Mount Type	Part Number
1.575	3.19	3.39	0.44-14 Nut	N211848-1X
1.575	2.23	6.61	M10X1.5 Stud	N212028-1X
1.575	2.23	6.61	0.52 Hole	N235150 w/cup
1.575	2.23	6.61	0.52 Hole	N235200 w/ cushion retainer

NEAPCO, LLC 740 Queen St. Pottstown, PA 19464

Innovative Drivetrain Solutions

Phone: 800-821-2374
E-mail: hd@neapco.com
©2006 NEAPCO, LLC

(Insert this sheet into
Section XI in the
DS245 Master Catalog)
9901102

Fax: 610-326-2002
Web site: www.neapco.com
07/06 1