

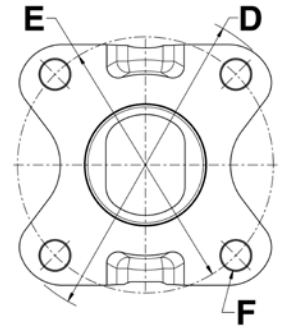
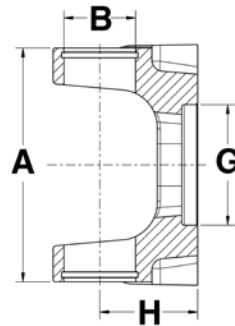


# New Part Announcement

## New 1310 Series Conversion Flange Yoke N2-2-206

### OUTSIDE LOCK-UP

*The N2-2-206 Flange Yoke converts various Dodge Dakota, Durango, and Jeep Cherokee drive shafts with NTN 6 ball plunge style joints to 1310 series. It allows you to provide your customer with an alternative to the dealer only service shaft. The N2-2-206 compliments the N2-83-206, our 1310 series CV flange adapter and will allow you to build a replacement driveshaft in either a single joint or double cardan joint configuration.*



D	E	F		G		H	
Swing Diameter	Bolt Circle	Hole/Thread Size	No. Bolt Holes	Pilot Diameter	Joint Angle (Deg)	Flange Face To Centerline	Part No.
1310 Series	use Kit No. 1-0153	A-3.469		B-1.063	(Replaces Spicer® 5-153X)		
3.937	3.386	0.323	6	M-3.937	20°	2.19	N2-2-206

NEAPCO Components, LLC 740 Queen St. Pottstown, PA 19464

Phone: 800-821-2374

E-mail: [hd@neapco.com](mailto:hd@neapco.com)

**Innovative Drivetrain Solutions**™

Fax: 610-326-2002

Web site: [www.neapco.com](http://www.neapco.com)

©2009 NEAPCO Components, LLC

9901140

06/2009

1



# Product Announcement

## Rock Crawler Driveshaft Assembly Components 20 Inch Extreme Length Slip



### For Off Road Applications Only

This driveline assembly provides the driveline specialist a solution for the off road rock crawlers that require a long slip driveshaft due to high lift kits and extreme suspension travel.

## N1310 Assembly Components Listing

Part No.	Part Description
2231-3	Long Spline Stub Shaft 1.625 – 10 spline (O.A.L. 27.88” Spline Length 25.5” )
53-2415	Sleeve <i>Note: 53-2415 sleeve must be turned down to accept 2.00”x .120 tubing</i>
N2-4-803-1	End yoke (weld, 1.375 bore blank)
N2-28-1757 <b>1</b>	Tube Weld Yoke 2.00 x .120
N16-30-102-72	2.00 x.120 Tubing

**1** If a Double Cardan CV is desired use N912777 in place of the N2-28-1757 tube weld yoke.

NEAPCO Components, LLC 740 Queen St. Pottstown, PA 19464

Phone: 800-821-2374

E-mail: [hd@neapco.com](mailto:hd@neapco.com)

**Innovative Drivetrain Solutions**™

Fax: 610-326-2002

Web site: [www.neapco.com](http://www.neapco.com)

©2009 NEAPCO Components, LLC

9901276

07/2009

1



## Product Announcement

### ***NEAPCO's Exclusive Sprinter Fix***

*Neapco® is proud to announce the availability of two new driveshaft repair kits for Dodge, Freightliner, and Mercedes-Benz Sprinter vans through year models 2006 that are configured with two piece or three piece driveshafts. These kits, along with standard Neapco off the shelf components, allow the driveline specialist to convert a staked in place OEM universal joint driveshaft to conventional 1350 series.*

*The **N135-254 fixed center section driveshaft repair kit** includes a center support bearing and will replace the OEM flange and flange yoke with a conventional mid-ship stub and end yoke.*

*The **N135-254-1 slip center section driveshaft repair kit** includes a center support bearing and will replace the OEM slip sleeve and yoke shaft with a conventional slip mid-ship stub and slip yoke.*

*Both kits are configured for use with standard 3"X.083" tubing. However, the components can be modified to work with the OEM tubing for added flexibility.*

NEAPCO Components, LLC 740 Queen St. Pottstown, PA 19464

Phone: 800-821-2374

E-mail: [hd@neapco.com](mailto:hd@neapco.com)

**Innovative Drivetrain Solutions™**

Fax: 610-326-2002

Web site: [www.neapco.com](http://www.neapco.com)

©2009 NEAPCO Components, LLC

9901138

03/2009

1



## ***N135-254 FIXED CENTER SECTION DRIVESHAFT REPAIR KIT***



*This kit contains a newly developed half round style end yoke that is designed specifically for the **fixed center section driveshaft repair**. By including a special bushing, the end yoke can be used with a standard Neapco mid-ship stub which provides added flexibility.*

*For your convenience, the kit also includes the correct mid-ship nut and center support which can also be purchased separately.*



## ***N135-254-1 SLIP CENTER SECTION DRIVESHAFT REPAIR KIT***

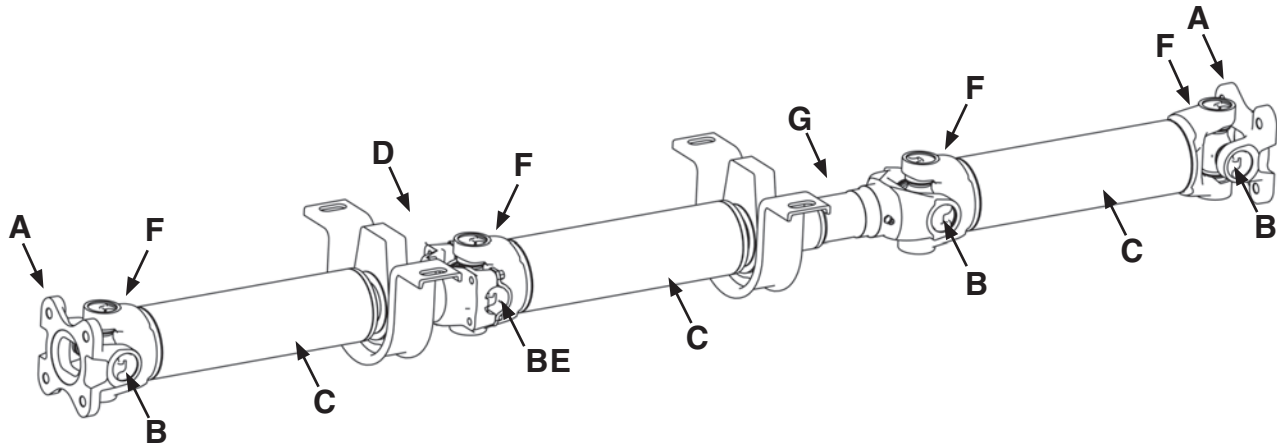


*This kit contains a newly developed slip mid-ship stub that is designed specifically for the **slip center section driveshaft repair**. The precision ground bearing diameter is designed to fit into the center support bearing.*

*For your convenience and added flexibility, the kit also includes the correct Neapco slip yoke / seal and center support which can also be purchased separately.*



***SPRINTER DRIVESHAFT REPAIR COMPONENTS***



KEY	PART NUMBER	PART DESCRIPTION	QTY 3-PC SHAFT	QTY 2-PC SHAFT
<b>A</b>	N3-2-5104	Flange Yoke	2	2
<b>B</b>	2-0799	Universal Joint	4	3
<b>C</b>	N24-30-42-72	Tubing	3	2
<b>D</b>	N135-254	Repair Kit	1	0
<b>E</b>	1-0019	Strap Kit	1	0
<b>F</b>	N3-28-57	Tube Weld Yoke	4	3
<b>G</b>	N135-254-1	Repair Kit	1	1