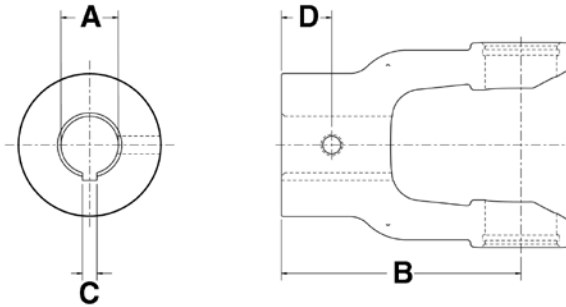




Product Announcement

New PTO Implement Yoke

METRIC — Round Bore Keyway



Part Number	A Bore	B Length		C Keyway width	Set screw thread	D Set screw dist. to end		Series ¹	Ref. U-Joint
		mm	in.			mm	in.		
8-0500	30 mm	79	3.11	10 mm	M10	15	0.59	B & P 1	1-0121
8-0518	25 mm	79	3.11	8 mm	M10	15	0.59	W 2100	1-1001
8-0519	30 mm	79	3.11	8 mm	M10	15	0.59	W 2100	1-1001
8-0509	25 mm	82	3.23	8 mm	M10	20	0.79	B & P 2, W 2200	1-0221
8-0508	1.125 in.	82	3.23	.25 in.	.375 - 16	20	0.79	B & P 2, W 2200	1-0221
8-0510	30mm	82	3.23	8 mm	M10	20	0.79	B & P 2, W 2200	1-0221
8-0507	1.375 in.	82	3.23	.312 in.	.375 - 16	20	0.79	B & P 2, W 2200	1-0221
8-0511	1.188 in.	85	3.35	.312 in.	.375 - 16	20	0.79	B & P 3, W I	1-0321

Series¹ B&P = Bondioli & Pavesi
Series¹ W = Walterscheid

OVER -Continued on next page!

NEAPCO Components, LLC 740 Queen St. Pottstown, PA 19464

Phone: 800-821-2374

E-mail: hd@neapco.com

Innovative Drivetrain Solutions™

Fax: 610-326-2002

Web site: www.neapco.com

©2009 NEAPCO Components, LLC

9901217

12/2009

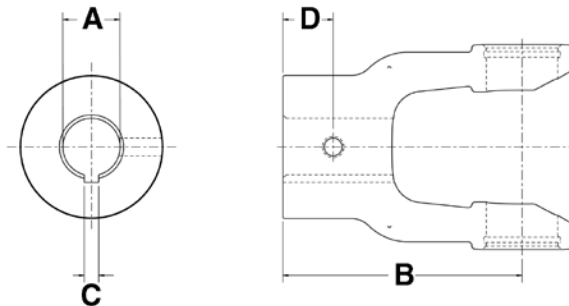
1



Product Announcement

New PTO Implement Yoke

METRIC — Round Bore Keyway



Part Number	A Bore	B Length		C Keyway width	Set screw thread	D Set screw dist. to end		Series ¹	Ref. U-Joint
		mm	in.			mm	in.		
8-0513	30 mm	98	3.86	8 mm	M10	20	0.79	B & P 4, W 2300	1-0421
8-0512	1.50 in.	98	3.86	.375 in.	.375 - 16	20	0.79	B & P 4, W 2300	1-0421
8-0505	40 mm	96	3.78	12 mm	M12	20	0.79	W 2400	2-2421
8-0501	1.50 in.	96	3.78	.375 in.	.375 - 16	20	0.79	B & P 5	2-0521
8-0506	35 mm	105	4.13	10 mm	M12	25	0.98	W 2500	3-2521
8-0514	1.50 in.	105	4.13	.375 in.	.375 - 16	20	0.79	B & P 6, W 220	3-0621
8-0516	40 mm	105	4.13	12 mm	M12	20	0.79	B & P 6, W 220	3-0621
8-0515	1.75 in.	105	4.13	.375 in.	.375 - 16	20	0.79	B & P 6, W 220	3-0621
8-0502	2.00 in.	120	4.72	.50 in.	.375 - 16	25	0.98	B & P 8	3-0821
8-0503	1.375 in.	130	5.12	.312 in.	.375 - 16	25	0.98	B & P 9	3-0921
8-0504	1.50 in.	130	5.12	.375 in.	.375 - 16	25	0.98	B & P 9	3-0921

NEAPCO Components, LLC 740 Queen St. Pottstown, PA 19464

Phone: 800-821-2374
E-mail: hd@neapco.com

Innovative Drivetrain Solutions™

Fax: 610-326-2002
Web site: www.neapco.com