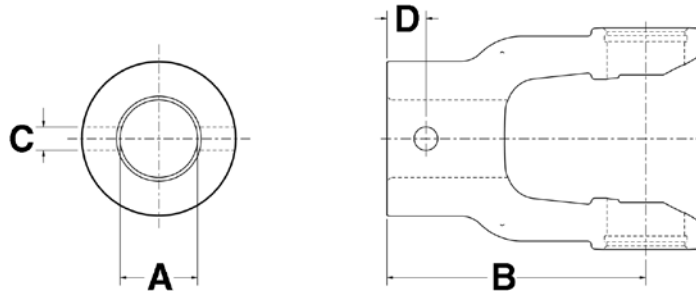




Product Announcement

New PTO Implement Yoke

METRIC — Round Bore Shear Bolt



Part Number	A Bore	B Length		C Bolt hole dia.	D Bolt hole dist. to end mm		Series ¹	Ref. U-Joint
		mm	in.		mm	in.		
8-0517	1.25 in.	79	3.11	.375 in.	15	0.59	B & P 1	1-0121
8-0521	1.25 in.	82	3.23	.375 in.	15	0.59	B & P 2, W 2200	1-0221
8-0522	1.375 in.	82	3.23	.375 in.	15	0.59	B i & P 2, W 2200	1-0221
8-0524	25 mm	85	3.35	8 mm	20	0.79	B & P 3, W I	1-0321
8-0525	30 mm	85	3.35	10 mm	20	0.79	B & P 3, W I	1-0321
8-0523	1.25 in.	85	3.35	.375 in.	20	0.79	B & P 3, W I	1-0321
8-0527	30 mm	98	3.86	10 mm	20	0.79	B & P 4, W 2300	1-0421
8-0526	1.25 in.	98	3.86	.375 in.	20	0.79	B & P 4, W 2300	1-0421
8-0520	40 mm	96	3.78	13 mm	20	0.79	W 2400	2-2421
8-0528	1.25 in.	105	4.13	.375 in.	20	0.79	B & P 6, W 220	3-0621

Series¹ B&P = Bondioli & Pavesi

Series¹ W = Walterscheid

NEAPCO Components, LLC 740 Queen St. Pottstown, PA 19464

Phone: 800-821-2374

E-mail: hd@neapco.com

Innovative Drivetrain Solutions™

Fax: 610-326-2002

Web site: www.neapco.com

©2009 NEAPCO Components, LLC

9901218

12/2009

1